



ALLERS ALUMINIUM

Introducing Our Latest Innovation:

uPVC Windows & Doors

Allers Aluminium is proud to expand our offering with high-performance uPVC solutions—designed for durability, energy efficiency, and modern living.





ALLERS ALUMINIUM



Engineered for **Performance.**
Designed for the Future.

With over 70 years of global experience in advanced polymer engineering, REHAU delivers premium uPVC window and door systems trusted by architects, contractors, and developers worldwide. In South Africa, our commitment is local—with fully equipped manufacturing partners, technical support teams, and warehousing in Isando, Johannesburg.

Rehau systems are built for superior performance.

Why Rehau?

Whether you're designing energy-efficient high-rises or sustainable housing, REHAU systems are built for superior performance—delivering unmatched thermal insulation, acoustic control, weather resistance, and lasting durability.

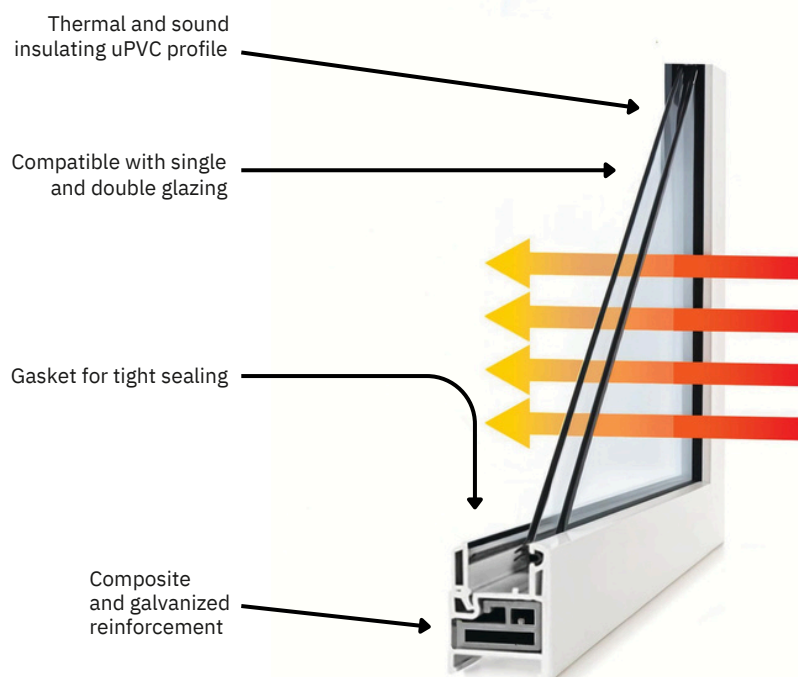
Our range of profiles can be used separately or in combination and are engineered to meet your project's requirements for compliance, efficiency, and value.



Innovation Technology

Rehau systems are built for superior performance.


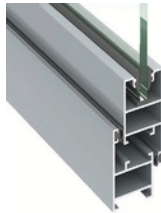
- **Multi-point locking systems**
Provide superior security and reliable protection.
- **Welded corners**
Better insulation, lower U-values & SHGC = improved solar control, and reduced energy costs.
- **Thermal efficiency**
Keep your home or building cooler in summer, warmer in winter.
- **Weather resistance**
Say good bye to corrosion and sun damage.
- **Acoustic insulation**
Reduce outdoor noise for quieter living.
 - **Trusted brand**
The Trusted Premium in uPVC. When compared side by side, REHAU profiles consistently deliver better performance, longer durability, and greater peace of mind than cheaper, generic alternatives.
- **No rust, rot & warping**
uPVC resists rust, rot, and warping, giving you a long-lasting, low-maintenance solution.
- **Structural Integrity**
Designed to resist high wind loads.



uPVC vs Aluminium

Not all frames are equal

Comparing uPVC to basic hollow aluminium frames is like comparing a multi-layer insulated wall to a single-sheet metal panel. Both act as barriers—but only one offers superior thermal insulation, noise reduction, and long-term performance.

Feature	Rehau uPVC	Hollow Aluminium
		
Energy Efficiency	✓ Fully Insulated	✗ No Thermal Break
Soundproof	✓ Multi-Chambered	✗ Hollow = Noisy
Maintenance	✓ No Painting, No Rust	✗ Prone to Fading, Chipping
Coastal Durability	✓ Corrosion-Free	✗ Rust Quickly
Seals & Gaskets	✓ Long-Lasting	✗ Frequent Failures
Security	✓ Multi-Locking	✗ Often Single-Point Only
Drainage	✓ Built-In System	✗ Risk of Frame Flooding
Longevity	✓ Colourfast, UV Safe	✗ Fades & Dulls Over Time
Value	✓ Save Money Over Time	✗ More Repairs, Less Benefit



Window Range Overview

The future of innovation

	Top Hung	Side Hung	Tilt & Turn	Sliding	Fixed	Price Point
Pure Line	✓	✓	✗	✗	✓	Budget
Ecotec	✓	✓	✓	✗	✓	Premium
Euro Design Slide	✗	✗	✗	✓	✗	Premium
Agila	✗	✗	✗	✓	✗	Elite

Fenestration Area	Maximum Fenestration Value	Cold Aluminium	uPVC
≤ 20%	Any Solution	Single Glazing	Single Glazing
≤ 25%	5.2		
≤ 30%	4.4	Double Glazing	
≤ 35%	3.8		
≤ 40%	3.3	Not Possible	Double Glazing
≤ 45%	3		
≤ 50%	2.6		
≤ 55%	2.4		
≤ 60%	2.2		Not Possible
> 60%	2		

For commercial buildings, uPVC frames offer a significant advantage in achieving lower U-values and improving overall energy performance.

In contrast to hollow aluminium frames—commonly used in South Africa but known for their high thermal conductivity and heat leakage—uPVC provides superior insulation due to its low thermal conductivity and multi-chambered design. This helps reduce unwanted heat transfer, resulting in significantly lower U-values that contribute to energy savings and improved indoor climate control.

Additionally, uPVC requires minimal maintenance and offers long-term durability, making it a cost-effective and efficient choice for commercial developments aiming to meet modern energy efficiency standards.

PROTEA HOTEL SEA POINT OPTS FOR ECOTEC WINDOWS

At the Protea Hotel Sea Point, ECOTEC window profiles were selected to create a quiet, low-maintenance environment—ideal for the hotel’s location in a bustling, coastal setting. The profiles offer excellent sound insulation and are resistant to corrosion, making them perfectly suited for seaside conditions.





PURELINE CASEMENT

Construction Depth:	30mm
Chambers:	1 Chambers
Thermal Insulation: (Glass & System Dependent)	Uw = 2.9W/m ² K = DGU (Double Glazing Unit) Uw = 4.6W/m ² K = SGU (Single Glazing Unit)
Sound Insulation:	Up to 32dB
Test Certified:	SANS 613
Glazing Capacity:	4mm ~ 18mm

PURELINE Single Glazing offers a U-value up to 2.9 and an SHGC up to 0.41—ideal for South African climates.

Unlike aluminium, our low-conductivity uPVC frames reduce heat transfer, improving insulation and energy efficiency.

PURELINE also cuts external noise by up to 32 decibels. When paired with the right glazing, it creates a more peaceful indoor space. With uPVC, you can increase fenestration area using the same glass, saving on material costs while maintaining similar pricing across our standard PURELINE profiles.



ECOTEC CASEMENT

Construction Depth:	60mm
Chambers:	3 Chambers
Thermal Insulation: (Glass & System Dependent)	Uw = 2.1W/m ² K = DGU (Double Glazing Unit) Uw = 3.3W/m ² K = SGU (Single Glazing Unit)
Sound Insulation:	Up to 40dB
Test Certified:	SANS 613
Glazing Capacity:	4mm ~ 30mm

Engineered for versatility across residential and commercial projects, the **ECOTEC** 60mm profile system offers a cost-effective, high-performing solution for modern fenestration requirements.

This 3-chamber profile system supports double glazing with a U-value of up to 2.1 and a Solar Heat Gain Coefficient (SHGC) of up to 0.34—ensuring improved thermal efficiency and occupant comfort year-round.

Designed with practicality in mind, **ECOTEC** features dual seals for reliable protection against wind, rain, and dust. The smooth surface finish and streamlined profile geometry simplify cleaning and reduce maintenance demands over time.

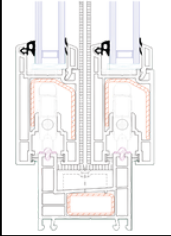
Ideal for developers, contractors, and specifiers seeking a dependable, easy-to-install system that meets both budget and performance expectations.

Rehau Doors

Anything but ordinary

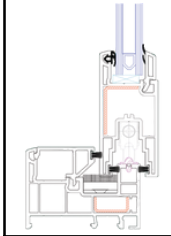
Take what comes to mind when you think of patio doors and put it aside. REHAU doors are designed to open up the spaces you live in. Our sliding patio door designs are customizable, versatile and work equally well as the perfect solution for your replacement project, a new addition or new construction.

	Single Door	French Door	Slide & Fold Door	Sliding Door	Stacking Door	Price Point
Pure Line (Standard Profile)	✗	✗	✗	✓	✗	Budget
Ecotec (Premium Profile)	✗	✓	✓	✗	✓	Premium
Euro Design Slide (Premium Profile)	✗	✗	✗	✓	✗	Premium
Agila (Premium Plus Profile)	✗	✗	✗	✓	✗	Elite

	EURO DESIGN SLIDE
Construction:	60mm (Double Track)/ 108mm (Triple Track)
Chambers:	3 Chambers
Thermal Insulation: (Glass & System Dependent)	Uw = 2.1W/m ² K=DGU (Double Glazed Unit) Uw = 3.3W/m ² K = SGU (Single Glazed Unit)
Sound Insulation:	Up to 32dB
Test Certified:	SANS 613
Glazing Capacity:	3mm ~ 24mm

The **REHAU Euro-Design Slide System** enhances security with multiple locking points, fusion-welded corners, and steel-reinforced, multi-chambered profiles. It meets SABS 1553 and SANS 613 structural, air, and water standards, with high performance in coastal and acoustic settings. All profiles carry a **10-year limited warranty**.

This 60mm system suits both renovations and new builds. Its multichambered design improves insulation, while the 8mm sash overlap ensures a tight seal—saving energy and preventing dust or water ingress. Components can combine with other REHAU systems for flexible design options.

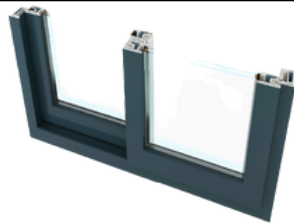
	PURELINE SLIDE
Construction:	60mm (Double Track)/ 116mm (Triple Track)
Chambers:	1-4 Chambers
Thermal Insulation: (Glass & System Dependent)	Uw = 2.9W/m ² K=DGU (Double Glazed Unit) Uw = 4.6W/m ² K = SGU (Single Glazed Unit)
Sound Insulation:	Up to 32dB
Test Certified:	SANS 613
Glazing Capacity:	4mm ~ 18mm

The **REHAU PURELINE Slide System** offers construction depths of 60mm (double track) or 116mm (triple track) and features 1–4 insulating chambers. It provides thermal insulation values of up to **Uw** = 2.9W/m²K with double glazing and up to **Uw** = 4.6W/m²K with single glazing, depending on the glass used.

Sound insulation reaches up to 32dB, helping to create a quieter interior environment. The system is certified to SANS 613 standards and accommodates glazing from 4mm to 18mm in thickness.



AGILE HIGH SLIDER



Construction:	86mm (Double Track)/ 160mm (Triple Track)
Chambers:	2-3 Chambers
Maximum Size:	Up to 5m x 2.5m (Dependent on Configuration)
Thermal Insulation: (Glass & System Dependent)	$U_w = 1.6W/m^2 K = DGU$ (Double Glazed Unit) $U_w = 3.3W/m^2 K = SGU$ (Single Glazed Unit)
Sound Insulation:	Up to 32dB
Max Sash Weight:	100kg per door using a 3-wheel roller 160kg per door using 5-wheel roller
Test Certified:	SANS 163
Glazing Capacity:	3mm ~ 30mm

The **REHAU AGILA High Slide System** offers robust construction at 86mm (double track) and 160mm (triple track), with 2–3 chamber profiles. It supports large openings up to 5m x 2.5m and accommodates glass thicknesses from 3mm to 30mm. Thermal insulation reaches $U_w = 1.6W/m^2K$ with double glazing and $U_w = 3.3W/m^2K$ with single glazing. Sound insulation is up to 32dB. Certified to SANS 613, it supports sash weights of 100kg with 2 wheel tandem rollers.

Profile Colours

Smart design, timeless colours

Available window profile colours:

Standard Colours Available in Stock. Rehau profiles are protruded in white. Painted profiles are available in 4 standard colours. All other RAL chart colours are available on request and are subject to lead times.



Jet black



Anthracite grey



Sepia brown



Matt stone grey



White



ALLERS ALUMINIUM

CONTACT DETAILS:

Swakopmund Branch:



PATRICK LUNGADHA STREET
ERF 4901, UNIT 17
NEW INDUSTRIAL AREA SWAKOPMUND



+264 61 261 455



OLIVER@ALLERSALUMINIUM.COM



WWW.ALLERSALUMINIUM.COM

Windhoek Branch:



17 HOLSTEIN STREET, LAFRENTZ INDUSTRIAL
WINDHOEK, NAMIBIA



+264 61 261 455



INFO@ALLERSALUMINIUM.COM



WWW.ALLERSALUMINIUM.COM

Cape Town Branch:



716 PROTEA ROAD, HELU PARK
KLAPMUTS, WESTERN CAPE



+27 (064) 676 4716



INFO.CPT@ALLERSALUMINIUM.COM



WWW.ALLERSALUMINIUM.COM



CERTIFIED FABRICATORS